

# AUNTIES TWO PATTERNS



## ROCKPORT CARRYALL (AT615)

Shown in *Call of the Wild*  
S4740-621-Arctic Blue

Large Size. Oversized Tote!  
18" wide x 12" deep x 16" tall

### Fabric Requirements:

**A Outside** - Fussy cut 2 panels and sew together to create one long piece.

**B Inside (Lining)** - 1 ¼ yard

**C Binding, Bottom, Handles** - 1 yard



**PANEL 1** Cut as shown. Consider using the big Penguin for the inside bottom of the bag.

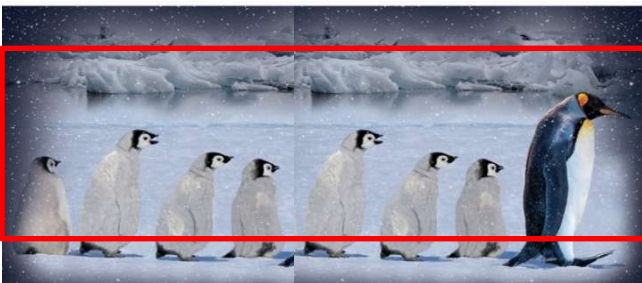
**PANEL 2** Cut off most of the last penguin. Leave about 1/8" of his belly fur



Sew two pieces together. Trim rectangle 56" long.



Fussy trim to 17 ¼" tall. This is about how we trimmed it.



Cut 2 pieces from lining one 17 ¼" tall x 40" long and one 17 ¼" tall x 16 ½" long . Sew together so it is 17 ¼" tall x 56" long.

Place lining on sewn panel piece, right sides facing. Match top edges. Sew across the top with a ¼" seam.

Piece should measure 35" by 56". Cut binding, bottom and handles from Fabric C. There is no bow on this bag; ignore any instructions for the bow.

Follow directions in your pattern and be sure to view the videos.

Seam

