

AUNTIES TWO PATTERNS

ROCKPORT CARRYALL (AT615)



Shown in *Call of the Wild*
S4740-621-Arctic Blue

Large Size. Oversized Tote!
18" wide x 12" deep x 16" tall

Fabric Requirements:

A Outside - Fussy cut 2 panels and sew together to create one long piece.

B Inside (Lining) - 1 ¼ yard

C Binding, Bottom, Handles - 1 yard



PANEL 1 Cut off most of the last penguin. Leave about 1/8" of his belly fur

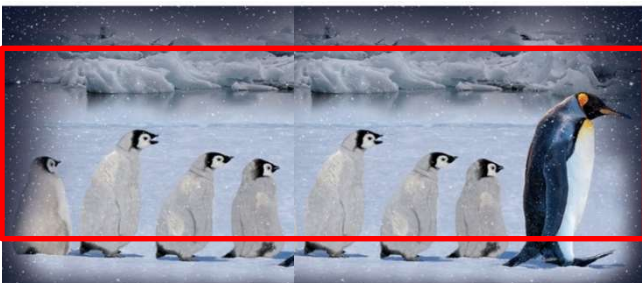
PANEL 2 Cut as shown. Consider using the big penguin for the inside bottom of the bag.



Sew two pieces together. Trim rectangle 56" long.



Fussy trim to 17 3/4" tall. This is about how we trimmed it.



Cut 2 pieces from lining one 17 3/4" tall x 45" long and one 17 3/4" x 11 1/2". Sew together so it is 17 3/4" x 56".

Place lining on sewn panel piece, right sides facing. Match top edges. Sew across the top with a 1/4" seam.

Piece should measure 35" by 56". Cut binding, bottom and handles from Fabric C. There is no bow on this bag; ignore any instructions for the bow.

Follow directions in your pattern and be sure to view the videos.

Seam

